

Insight 1 Unit 5: Image Set

How does what we do affect Heritage?

In determining what has to be done, there is also the question of who needs to be involved in taking things forward. After understanding the building, and what might be done to it, the correct approach to carrying out the work has also to be decided, who should be involved in doing it properly, and who might be responsible for ensuring the owners get what they have agreed to. But, often, other influences have to be taken into account.

This Insight Unit relates to the www.understandingconservation.org website Unit 5: Implementation and management of conservation works which restates the importance of operating with a philosophical and ethical understanding of conservation issues, and to advise effectively relevant current and future needs.

2: Brussels. Heritage is tactile with some elements subjected to much attention by touching rubbing off the patina. This can create a conservation problem in deciding how to deal with the consequences



3: Mostar's Rebuilt Bridge.
Concentrated numbers of
visitors in tight spaces and
areas can increase wear and
tear of materials and safety
concerns of viewing



4: Paphos. Although exposed to the elements a specially constructed viewing platform allows visitors to appreciate the mosaics without damaging them



5: Aix en Provence. A specially designed tractor-driven tourist train helps control the number of visitors walking through narrow streets



6: Landschaftspark Duisburg. A safe route for visitors has been specially created through the remains of this redundant steel works that otherwise is being allowed to decay



7: Amsterdam. Ceramic tile Art Nouveau signage incorporated as part of the original building



8: Durham. Installation of an discrete information plaque identifying the location of previous building features





Oifig na nOibreacha Poiblí
The Office of Public Works

Mainistir Bhuithe Monasterboice

Bhunaigh Naomh Buithe (a d'éag thart ar 520) Mainistir Bhuithe.
Monasterboice was founded by St Buite, who died around 520.

The monastery was an important centre of spirituality and learning for many centuries until the Cistercians arrived at nearby Mellifont in 1142.

The two churches which stand on the site today were probably built no earlier than the end of the 14th century. The round tower seems to have been the treasury as well as the belfry since the annals record that it was burned in 1097 along with the books and treasures of the monastery.

Monasterboice's great monuments are its high crosses which may have been used to tell the stories from the Bible to a congregation. Muiredach's Cross, one of the most perfect in Ireland, is named after an abbot, probably Muiredach mac Domhnaill who died in 923. It is 5.5m high and is decorated with figure sculpture

from both the Old and New Testaments. The west face of the cross-head has a crucifixion.



Ionad tábhachtach ab ea Mainistir Bhuithe i gcúrsaí spioradálta agus léinn ar feadh na gcéadta bliain, go dtí gur tháinig na Cisteirsigh go dtí Mainistir Mhór Dhroichead Átha, in aice láimhe, sa bhliain 1142.

Gach seans nár tógadh an dá eaglais atá ina seasamh san áit inniu níos túisce ná deireadh an 14ú haois. Tá an chuma ar an scéal go raibh an cloigtheach in úsáid mar thaisce i dteannta é a bheith ina chlogás, mar sna hannála tuairiscítear gur dódh é sa bhliain 1097 mar aon le leabhair agus taiscí na mainistreach.

Is iad na crosa arda na príomh-shéadchomharthaí i Mainistir Bhuithe. Meastar gur úsáideadh iad chun scéalta ón mBíobla a léiriú don phobal. Luaitear an chros is fearr in Éirinn, Cros Mhuiredhaigh, le hab darbh ainm Muiredach Mac Domhnaill, a d'éag sa bhliain 923.

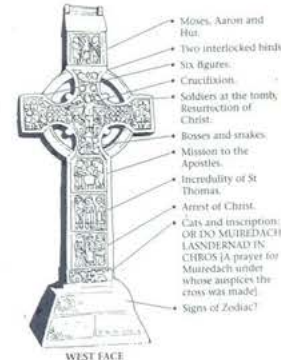
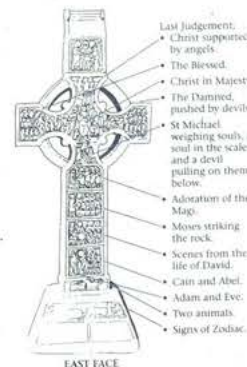
Tá sí 5.5m ar airde agus tá figiúirí ón Sean- agus ón Nua-Thiomna greanta uirthi. Tá dealbh na croiche greanta ar aghaidh thiar cheann na croise.



D'úsáid clag greine chun cúrsaí ama a shocrú sa mhainistir.
A sundial was used to tell time in the monastery.

The elegant West Cross, located close to the round tower, is also early 10th century in date. On the east face of its cross-head is the Second Coming of Christ while on the opposite face is a crucifixion. A reconstructed third high cross with a crucifixion stands inside a railing at the north end of the site.

Luaitear dáta i dtús an 10ú haois freisin leis an gcrós mhaorga thiar, atá suite in aice leis an gcloigtheach. Ar aghaidh thiar cheann na croise tá Teacht Chríost an Athuair léirithe, agus ar a chúl sin tá dealbh na croiche. Luistigh de na raillí ar an taobh thuaidh den suíomh seo tá cros ar eile a bhí briste ach atá curtha le chéile arís.



Monasterboice—from Mainistir Bhuithe (the Monastery of Buiteh)

This is the only early Irish monastery whose name incorporates the Irish word *mainistir*.
Is í seo an t-aon seomhairistir ainm ina bhfuil an focal *mainistir* mar chuid den ainm.

Féara - Tá an t-úsáidh artha náisiúnta seo faoi cheann Comhairle na nOibreacha Poiblí na hÉireann. Tá sé seo ina chuid de na h-ádhlaí na Stáid-homharthaí Náisiúnta. Tá sé seo ina chuid de na h-ádhlaí na Stáid-homharthaí Náisiúnta. Tá sé seo ina chuid de na h-ádhlaí na Stáid-homharthaí Náisiúnta.

Stáice - Tá an t-úsáidh náisiúnta seo faoi cheann Comhairle na nOibreacha Poiblí na hÉireann. Tá sé seo ina chuid de na h-ádhlaí na Stáid-homharthaí Náisiúnta. Tá sé seo ina chuid de na h-ádhlaí na Stáid-homharthaí Náisiúnta. Tá sé seo ina chuid de na h-ádhlaí na Stáid-homharthaí Náisiúnta.

10: Giant's Causeway. A newly installed visitor information centre providing a range of support facilities. But can also demand the provision of foundations and associated and hidden power, water and drainage services to allow it to function. In many cases this may put underground heritage at risk



Welcome to the
Giant's Causeway
World Heritage Site

Giant's Causeway ticket includes:

- Parking
- Exhibition
- Café
- Shop
- Audio-guide
- Guided walk

Adult £8.50

Child £4.25

Family £21.00
(2 adults + up to 3 children under 17 years, under 5's free)

National Trust
Members free

Public access on foot to the Causeway stones is free. If you avail of any of the above services, including parking, ticket charges will apply.

Tickets will be checked on exit



11: Schönbrunn. A modern designed entrance information booth installed with a limited impact on its ground location



12: Schönbrunn. A range of visitor information and control facilities installed with “plug-in plug-out” approach that creates minimal permanent physical damage to the original fabric



13: Pocitelj. Enterprising opportunities taken to offer the sale of locally produced goods to tourists at a gateway into the community



14: Sebenik. A historic integrated essential detail
for 'the love of dogs' in a hot climate



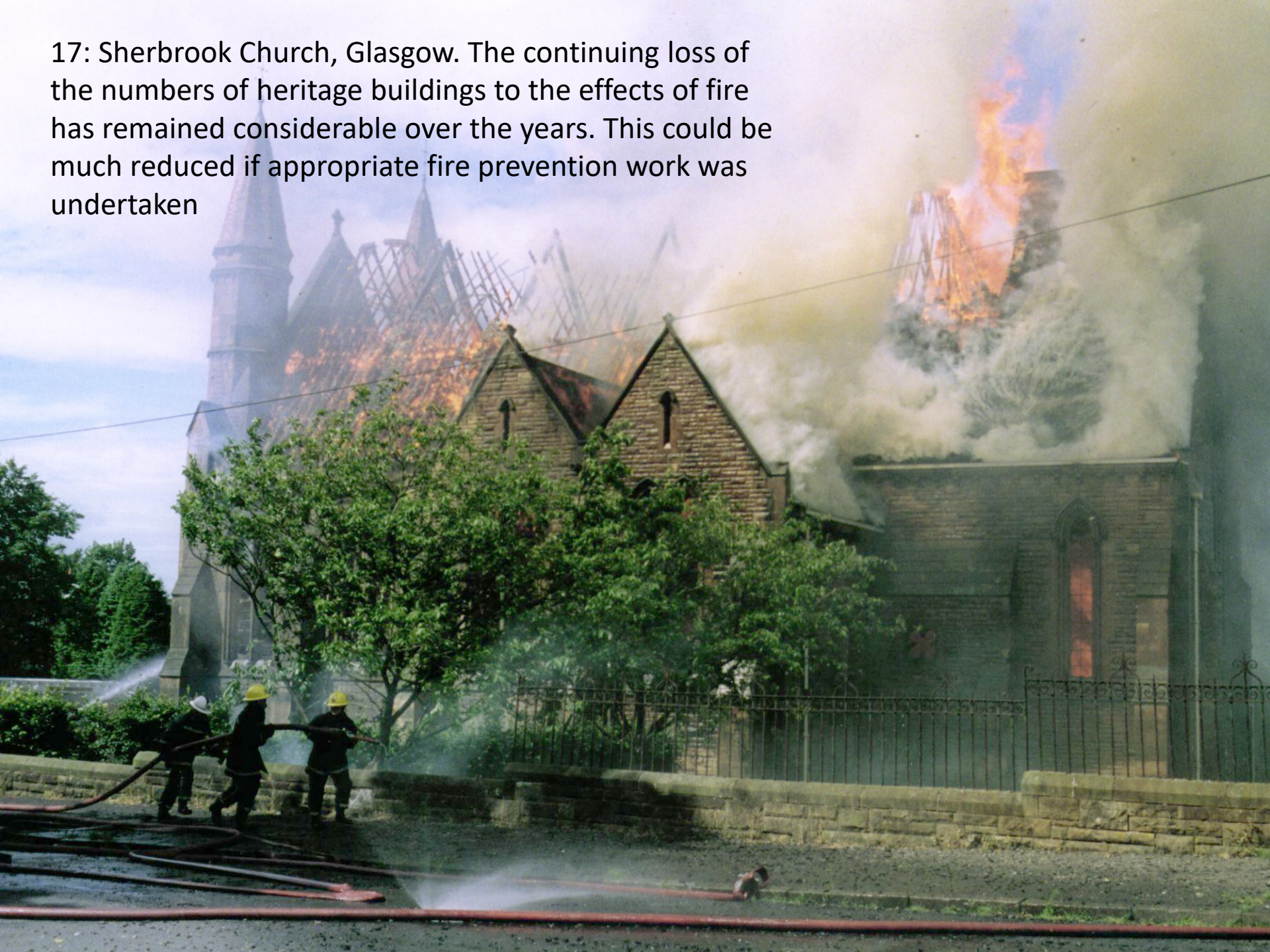


15: Enniscorthy, Co Wexford. The growing and damaging impact of climate change will need to be considered in greater detail in the future at many historic locations © Brian Walsh

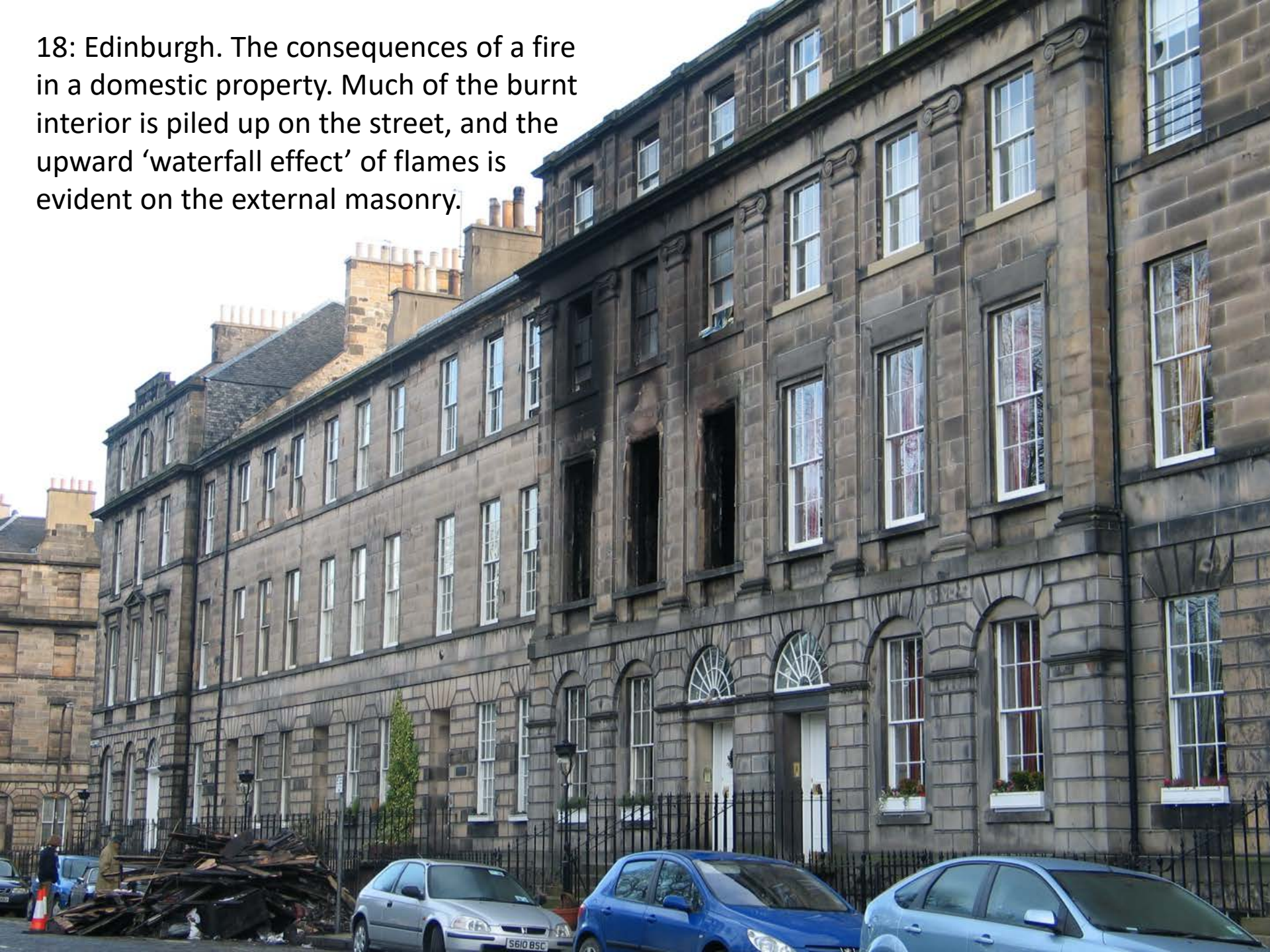
16: Duff House. The hidden consequences of previous external maintenance failures may go unnoticed even after the initial causes of dampness have apparently been remedied



17: Sherbrook Church, Glasgow. The continuing loss of the numbers of heritage buildings to the effects of fire has remained considerable over the years. This could be much reduced if appropriate fire prevention work was undertaken



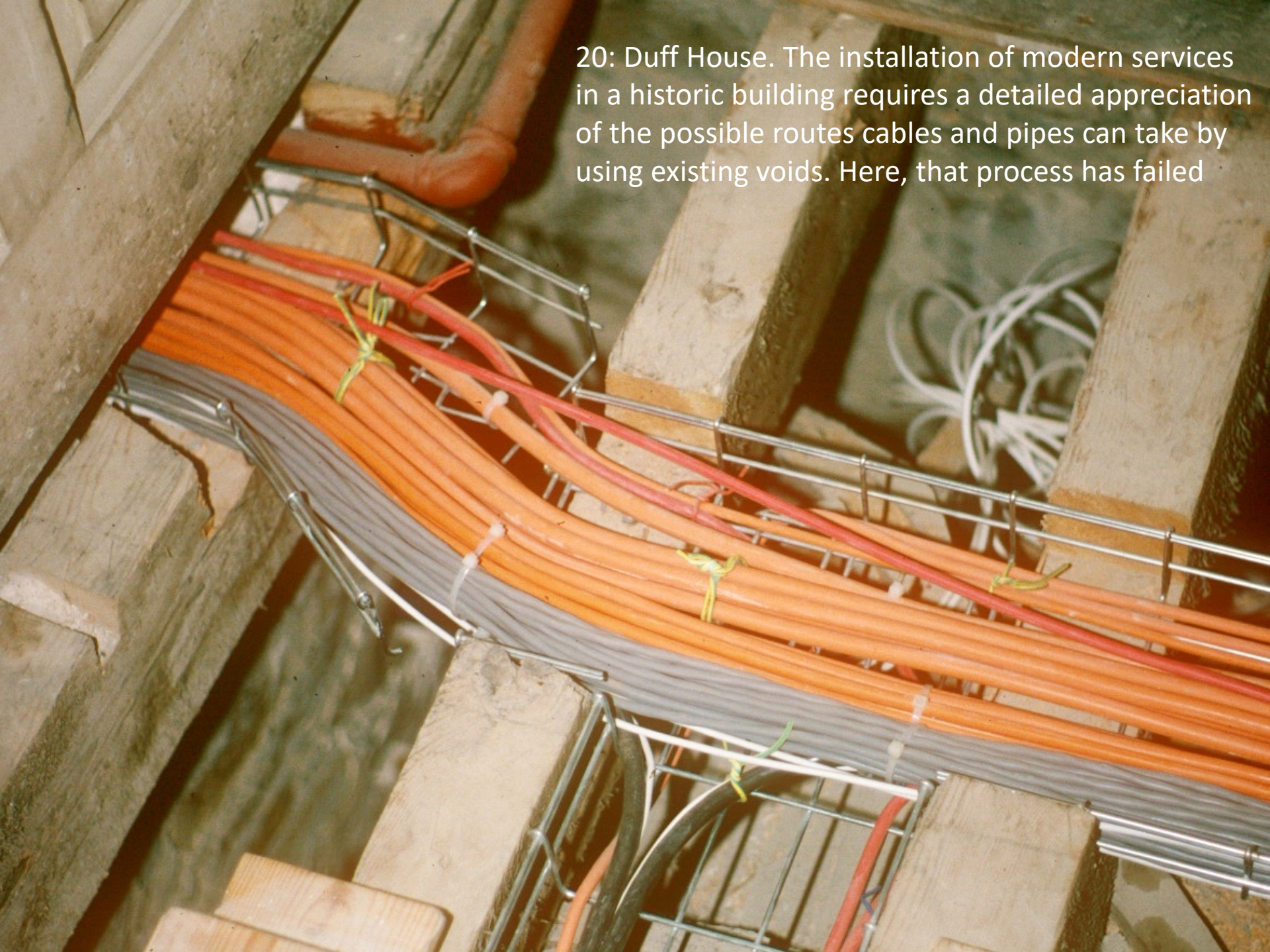
18: Edinburgh. The consequences of a fire in a domestic property. Much of the burnt interior is piled up on the street, and the upward 'waterfall effect' of flames is evident on the external masonry.





19: Duff House. Structural strengthening of a historic interior can be disruptive and requires careful consideration in advance of any work starting

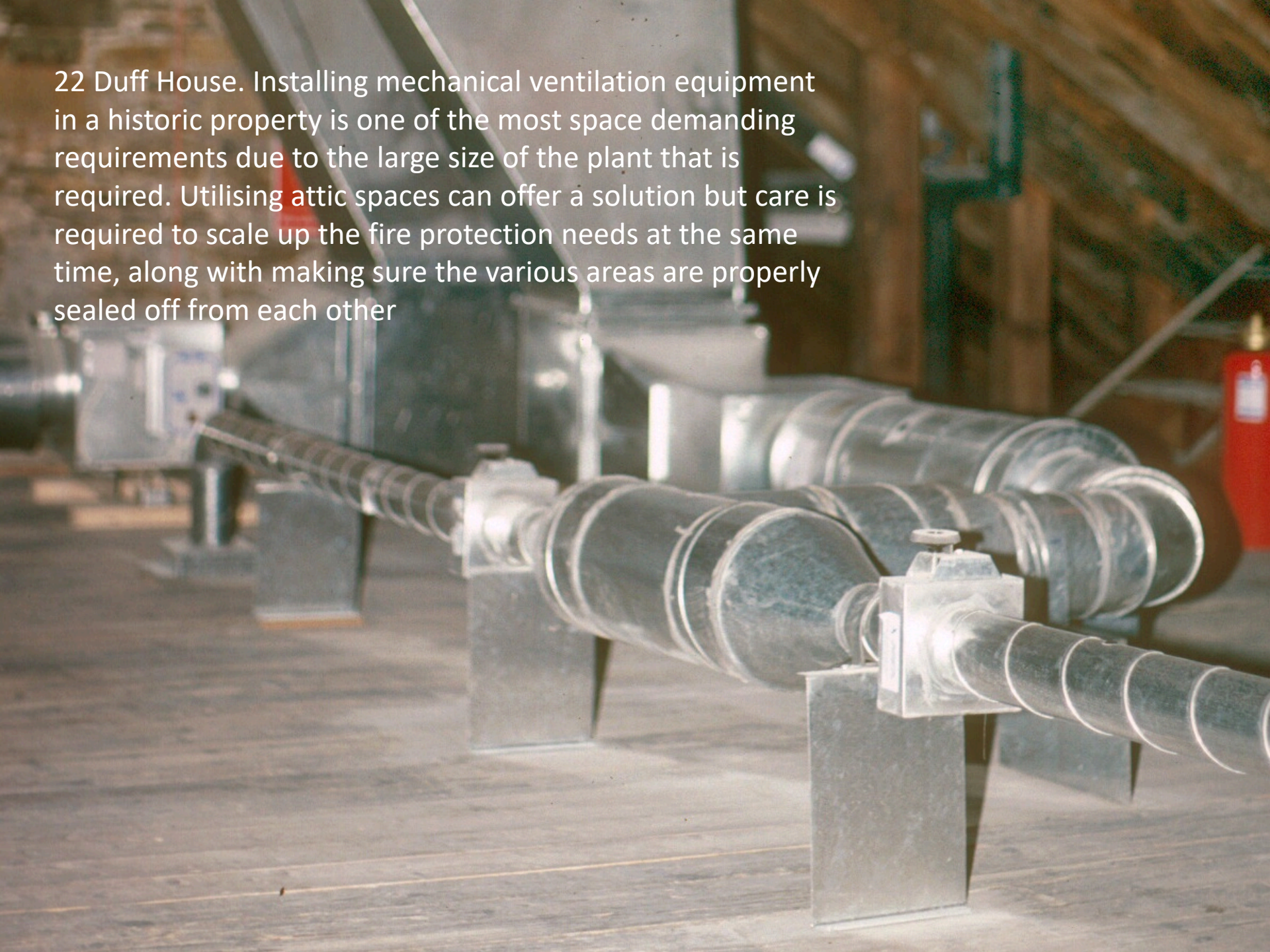
20: Duff House. The installation of modern services in a historic building requires a detailed appreciation of the possible routes cables and pipes can take by using existing voids. Here, that process has failed



21: Duff House, Reinstatement of the original floor board after the installation of sub-floor services is aided by the pre-identifying and numbering of each board's position on tape



22 Duff House. Installing mechanical ventilation equipment in a historic property is one of the most space demanding requirements due to the large size of the plant that is required. Utilising attic spaces can offer a solution but care is required to scale up the fire protection needs at the same time, along with making sure the various areas are properly sealed off from each other

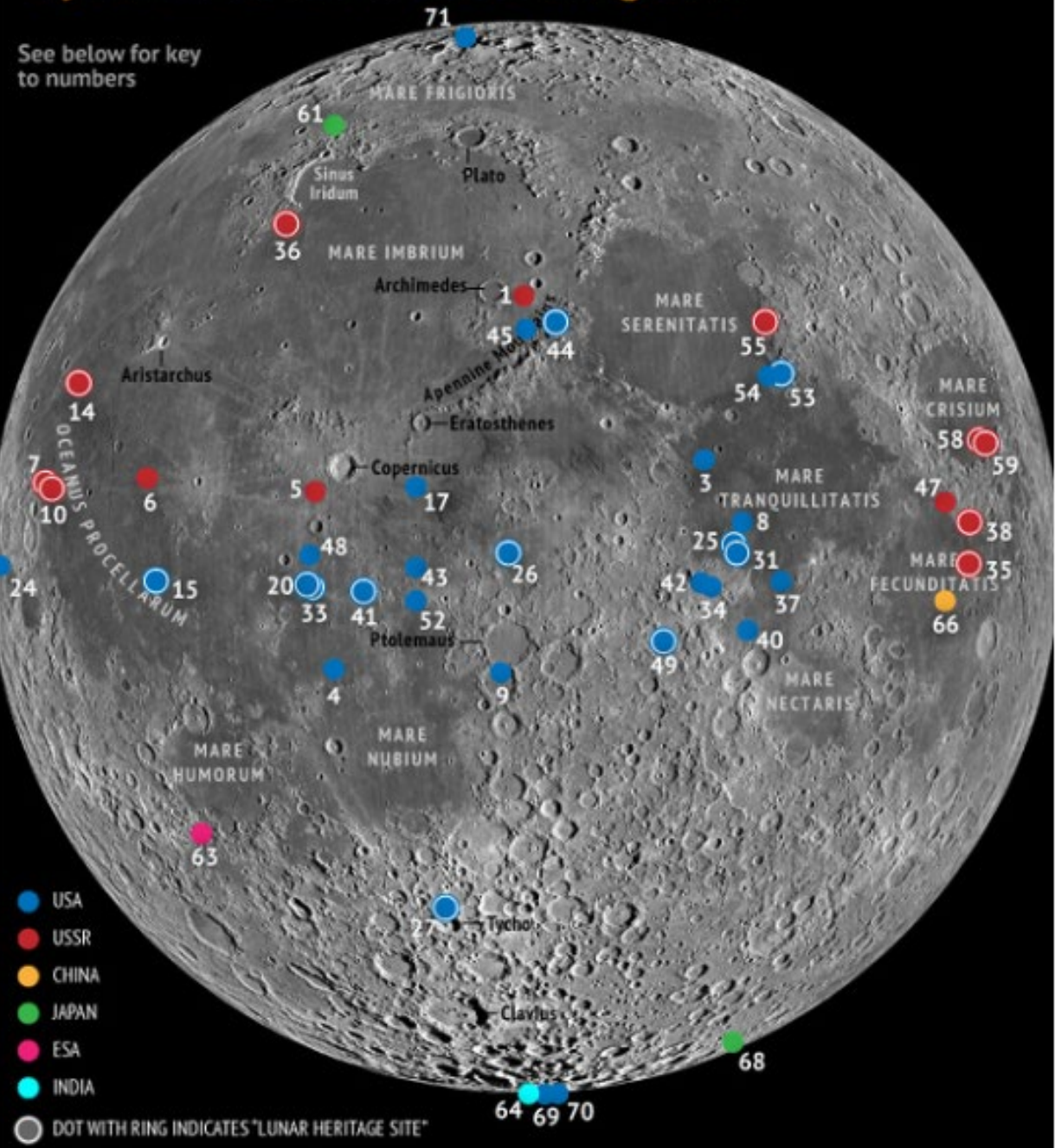


23: Shuttle Independence and NASA 905, Huston. Society is increasingly aware that as technological advances occur and made possible through the use of new materials, so too does the need to recognise the worth and value of what has been developed and offered as an insight of its time. Here, one of the the Jumbo's that transported mounted Shuttle's between landings and launches is presented with a replica Shuttle



Objects on the Moon's Side Facing Earth

See below for key to numbers



<http://www.space.com/18905-moon-spacecraft-dumping-ground-infographic.html>

Number	Agency	Year	Destination	Status
1	USA	1969	USA 1	Orbital crash
2	USA	1969	USA 2	Orbital crash
3	USA	1969	USA 3	Orbital crash
4	USA	1969	USA 4	Orbital crash
5	USA	1969	USA 5	Orbital crash
6	USA	1969	USA 6	Orbital crash
7	USA	1969	USA 7	Orbital crash
8	USA	1969	USA 8	Orbital crash
9	USA	1969	USA 9	Orbital crash
10	USA	1969	USA 10	Orbital crash
11	USA	1969	USA 11	Orbital crash
12	USA	1969	USA 12	Orbital crash
13	USA	1969	USA 13	Orbital crash
14	USA	1969	USA 14	Orbital crash
15	USA	1969	USA 15	Orbital crash
16	USA	1969	USA 16	Orbital crash
17	USA	1969	USA 17	Orbital crash
18	USA	1969	USA 18	Orbital crash
19	USA	1969	USA 19	Orbital crash
20	USA	1969	USA 20	Orbital crash
21	USA	1969	USA 21	Orbital crash
22	USA	1969	USA 22	Orbital crash
23	USA	1969	USA 23	Orbital crash
24	USA	1969	USA 24	Orbital crash
25	USA	1969	USA 25	Orbital crash
26	USA	1969	USA 26	Orbital crash
27	USA	1969	USA 27	Orbital crash
28	USA	1969	USA 28	Orbital crash
29	USA	1969	USA 29	Orbital crash
30	USA	1969	USA 30	Orbital crash
31	USA	1969	USA 31	Orbital crash
32	USA	1969	USA 32	Orbital crash
33	USA	1969	USA 33	Orbital crash
34	USA	1969	USA 34	Orbital crash
35	USA	1969	USA 35	Orbital crash
36	USA	1969	USA 36	Orbital crash
37	USA	1969	USA 37	Orbital crash
38	USA	1969	USA 38	Orbital crash
39	USA	1969	USA 39	Orbital crash
40	USA	1969	USA 40	Orbital crash
41	USA	1969	USA 41	Orbital crash
42	USA	1969	USA 42	Orbital crash
43	USA	1969	USA 43	Orbital crash
44	USA	1969	USA 44	Orbital crash
45	USA	1969	USA 45	Orbital crash
46	USA	1969	USA 46	Orbital crash
47	USA	1969	USA 47	Orbital crash
48	USA	1969	USA 48	Orbital crash
49	USA	1969	USA 49	Orbital crash
50	USA	1969	USA 50	Orbital crash
51	USA	1969	USA 51	Orbital crash
52	USA	1969	USA 52	Orbital crash
53	USA	1969	USA 53	Orbital crash
54	USA	1969	USA 54	Orbital crash
55	USA	1969	USA 55	Orbital crash
56	USA	1969	USA 56	Orbital crash
57	USA	1969	USA 57	Orbital crash
58	USA	1969	USA 58	Orbital crash
59	USA	1969	USA 59	Orbital crash
60	USA	1969	USA 60	Orbital crash
61	Japan	1993	Japan 1	Orbital crash
62	Japan	1993	Japan 2	Orbital crash
63	ESA	2001	ESA 1	Orbital crash
64	India	2008	India 1	Orbital crash
65	China	2008	China 1	Orbital crash
66	China	2008	China 2	Orbital crash
67	China	2008	China 3	Orbital crash
68	China	2008	China 4	Orbital crash
69	China	2008	China 5	Orbital crash
70	China	2008	China 6	Orbital crash
71	China	2008	China 7	Orbital crash

24: Extra-terrestrial Heritage. Since 1959 Earth has hurled many machines at the Moon. Many crashed to gather data, others by accident, some were left in their orbit to decay, and others landed safely. Mars has also been targeted where a number of man-made craft now remain on its surface